

SIX MODULE POLE MOUNT

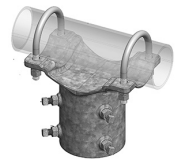
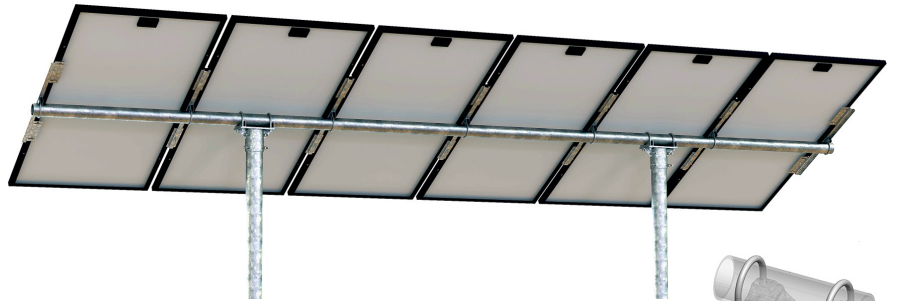
UNI-PGRM/6P2 (for modules 38"- 72" long)
UNI-PGRM/6P2-47 (for modules 72"- 96" long)

VERTICAL AND HORIZONTAL SCHEDULE-40* PIPE IS NOT INCLUDED. PURCHASE LOCALLY.

* Some wind speeds and snow loads require three vertical poles and/or Sch-80 horizontal/vertical pipe.

If an additional vertical pole is required order a 70-0300-PGM-B Pole Cap.

- Mount six solar modules with a total area of 150 sq-ft and a frame thickness between 1.18 and 2 inches*
- Suitable for wind speed up to 150 MPH and snow load up to 100 PSF
- Maximum post height of 6-feet above ground
- Tilt angle from 10° to 60°
- Ships via UPS
- Simple one-person installation and adjustment



70-0300-PGM-B

* Larger modules can be mounted with reduced wind and snow load.

User supplies: Vertical pole - two 4-inch steel pipes (4.5-inch OD)

Horizontal beam - 3-inch steel pipe (3.5-inch OD)

See table below to determine pipe requirements. See engineering memo for pier diameter & depth. Depths range from 5 to 10 feet with diameters of 18-inches or 24-inches.

3-inch horizontal beam must be a minimum of 11-inches wider than 6-times the solar module width.

Pipe Requirements for Various Tilt Angle, Wind and Snow Load - UNI-PGRM/6P2

Angle	Wind Speed	0 psf	10 psf	20 psf	30 psf	50 psf	80 psf	100 psf
10°	100 MPH	A	A	A	A	C	C	D
	130 MPH	A	A	B	B	C	C	D
	150 MPH	C	C	C	C	C	C	D
20°	100 MPH	A	A	A	B	C	C	C
	130 MPH	C	C	C	C	C	C	D
	150 MPH	C	C	C	C	C	C	D
30°	100 MPH	A	A	A	A	B	C	C
	130 MPH	B	B	B	C	C	C	C
	150 MPH	C	C	C	C	C	C	C
40°	100 MPH	A	A	A	A	B	C	C
	130 MPH	C	C	C	C	C	C	C
	150 MPH	C	C	C	C	C	C	C
50°	95 MPH	A	A	A	A	A	B	B
	130 MPH	C	C	C	C	C	C	C
	150 MPH	E	E	E	E	E	E	E
60°	95 MPH	A	A	A	A	A	A	A
	130 MPH	F	F	F	F	F	F	F
	150 MPH	G	G	G	G	G	G	G

Note A requires 2 Schedule 40 Poles and a Schedule 40 Beam

Note B requires 2 Schedule 80 Poles and a Schedule 40 Beam

Note C requires 3 Schedule 40 Poles and a Schedule 40 Beam

Note D requires 3 Schedule 80 Poles and a Schedule 40 Beam

Note E requires 3 Schedule 40 Poles, a Schedule 40 Beam and 1-ft bollards

Note F requires 2 Schedule 40 Poles, a Schedule 40 Beam and 2-ft bollards

Note G requires 2 Schedule 40 Poles, a Schedule 40 Beam and 3-ft bollards

Blocks that are shaded gray require 3 vertical poles. Order an additional 70-0300-PGM-B



Scan the QR Code above to download manuals and engineering certifications from the Tamarack Solar website.